

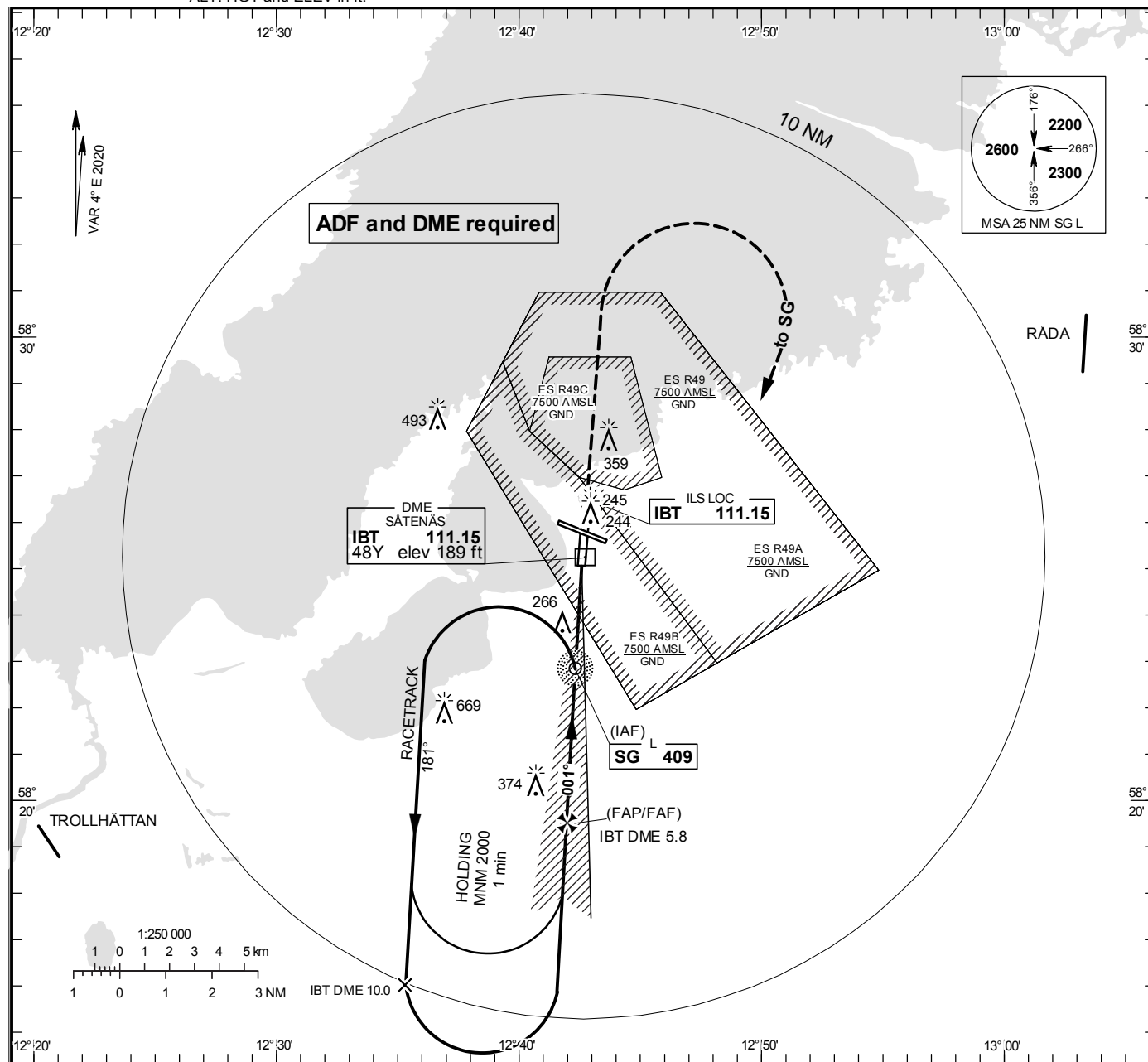
## SÄTENÄS

ILS or LOC RWY 01

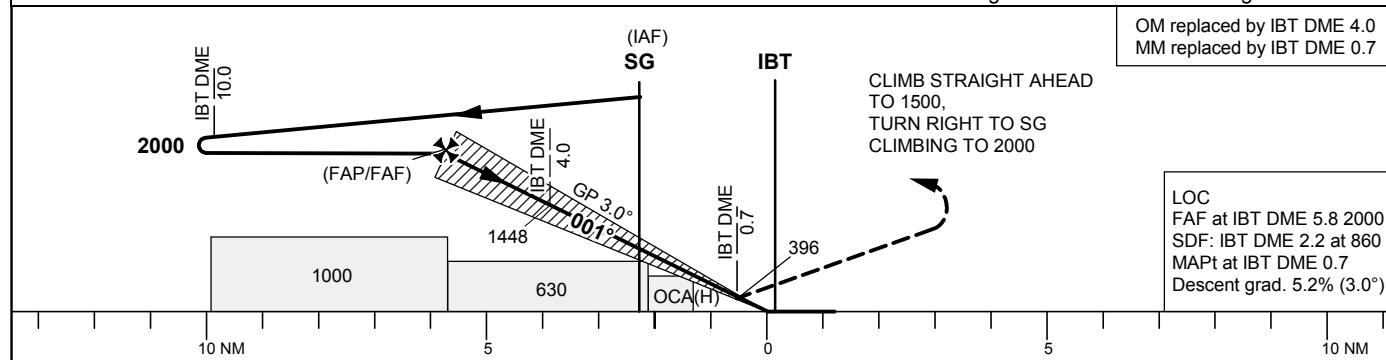
INSTRUMENT  
APPROACH  
CHART – ICAO

THR ELEV 169.4 ft, AD ELEV 181 ft  
OCH are related to THR.  
Circling OCH are related to AD ELEV.  
BRG are MAG  
ALT. HGT and ELEV in ft.

SÄTENÄS TOWER 128.200  
SÄTENÄS APPROACH 134.550



TA 5000 ft AMSL RDH 53.8 ft \*Timing not authorized for defining the MAPt



OCA (H)					Final approach	LOC Distance FAF-MAPT 5.1 NM*								
Cat of ACFT		A	B	C	D	DME IBT NM	5		4		3		2	
Straight-in Approach	Cat I	313 (143)	323 (153)	335 (165)	349 (179)	ALT	1770		1450		1130		810	
	LOC	520 (360)				GS	kt	80	100	120	140	160	180	
Circling		660 (480)	660 (480)	890 (710)	1070 (890)	Time	min:s	3:46	3:01	2:31	2:09	1:53	1:41	
						Rate of descent	ft/min	425	530	635	745	850	955	

CHANGE: Editorial